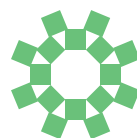


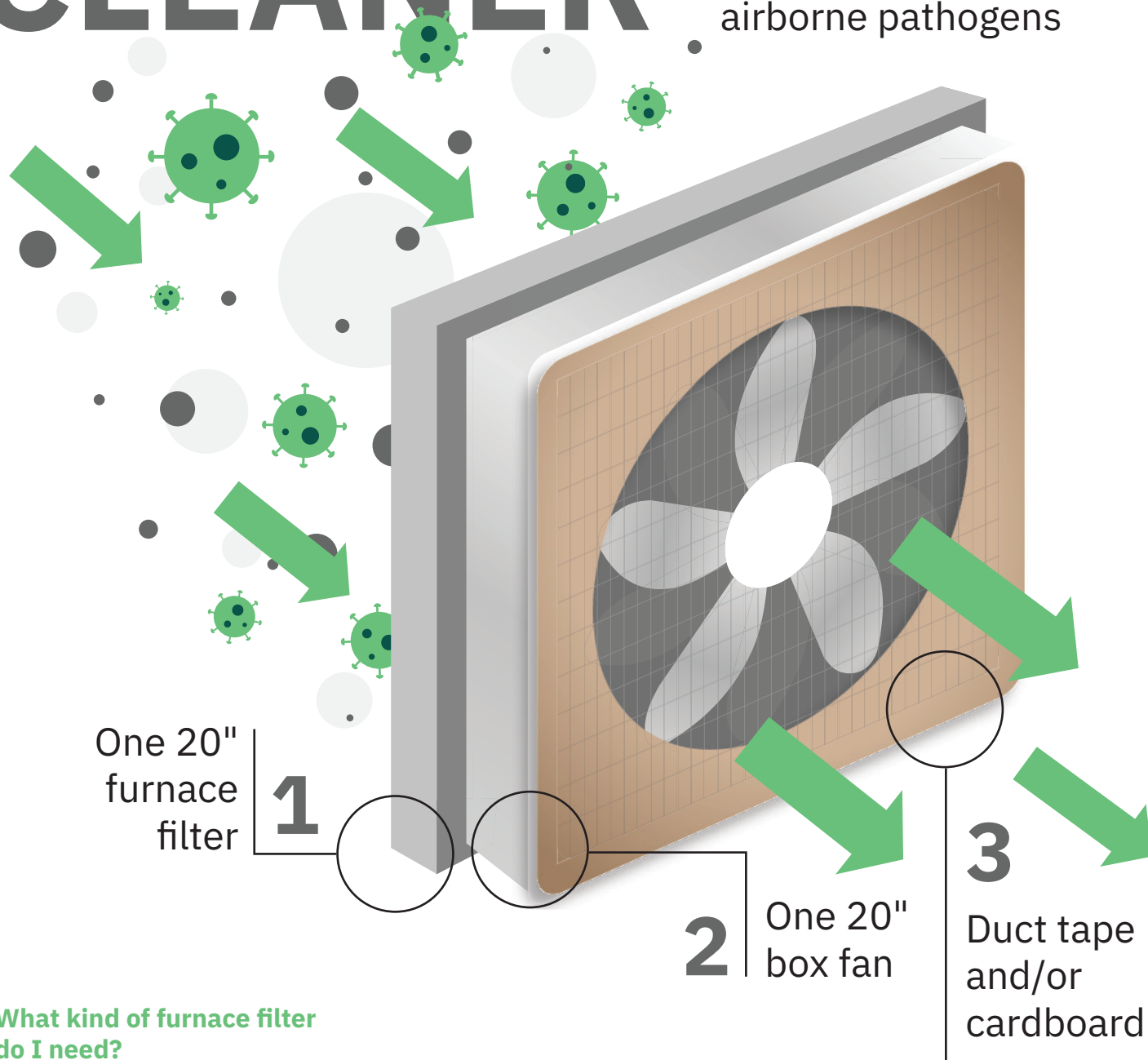
DIY AIR CLEANER



PIPPS

Pacific Institute on Pathogens,
Pandemics and Society

An emergency way to improve indoor air quality from fire smoke or airborne pathogens



What kind of furnace filter do I need?

Furnace filters are rated with MERV (Minimum Efficiency Reporting Value) or MPR (Microparticle Performance Rating) numbers. **MERV 13** or **MPR 1900** are recommended for fire smoke and airborne pathogens.

What kind of fan do I need?

The 20" box fan should be rated at 75–100 watts for greater airflow.

How does this work?

This setup will pick up fine smoke and virus particles in a small room.

What doesn't work?

These units will not pick up gasses such as CO₂ or radon. They are also not solutions for extreme heat events.

Building instructions and how-to videos: pipps.ca